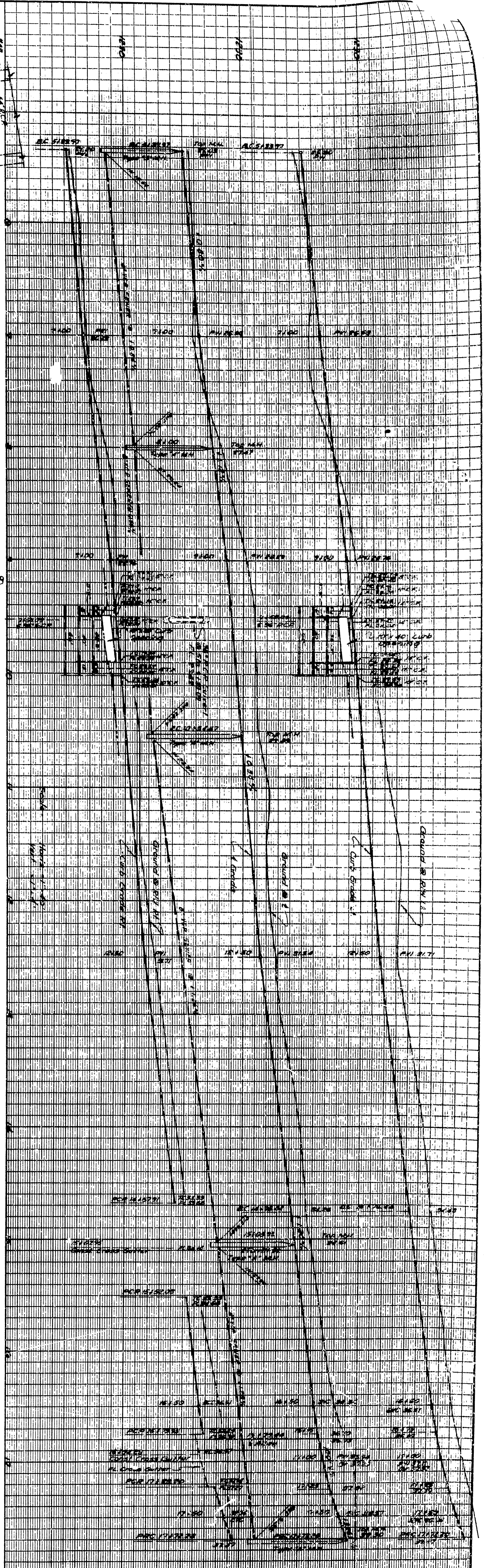


DEPARTMENT OF ENGINEERING
 CITY OF SAN BERNARDINO

LITTLE MOUNTAIN DRIVE
 FROM MT. VERNON AVE. TO 8729' HWY. 15

APPROVED BY: [Signature]
 CHECKED BY: [Signature]
 DRAWING NO. 2769
 SHEET 3 OF 3 SHEETS

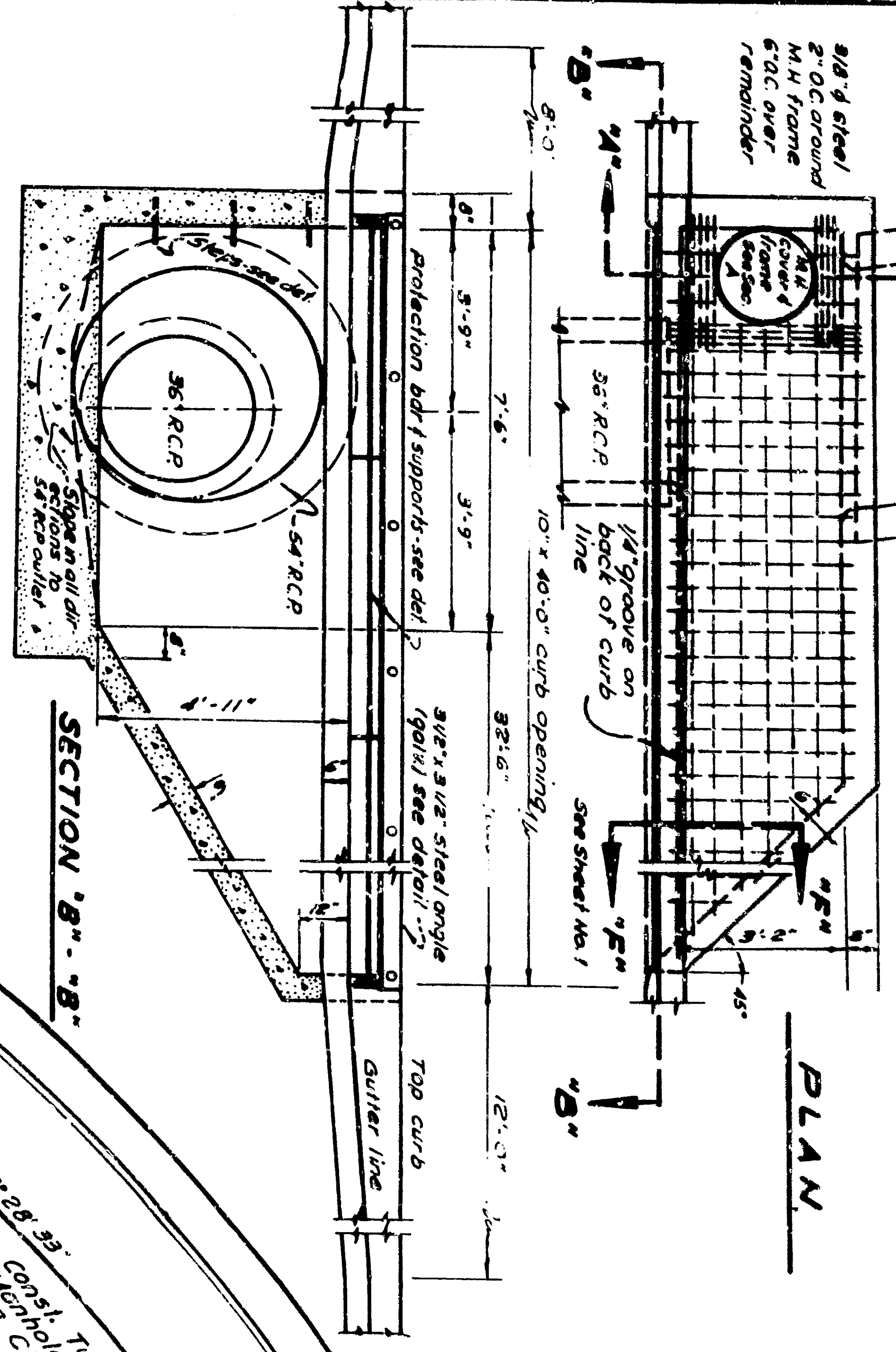
| | | |
|-----|-------------|---------|
| NO. | DESCRIPTION | DATE |
| 1 | As shown | 1/15/50 |
| 2 | Revised | 1/15/50 |



PLAN

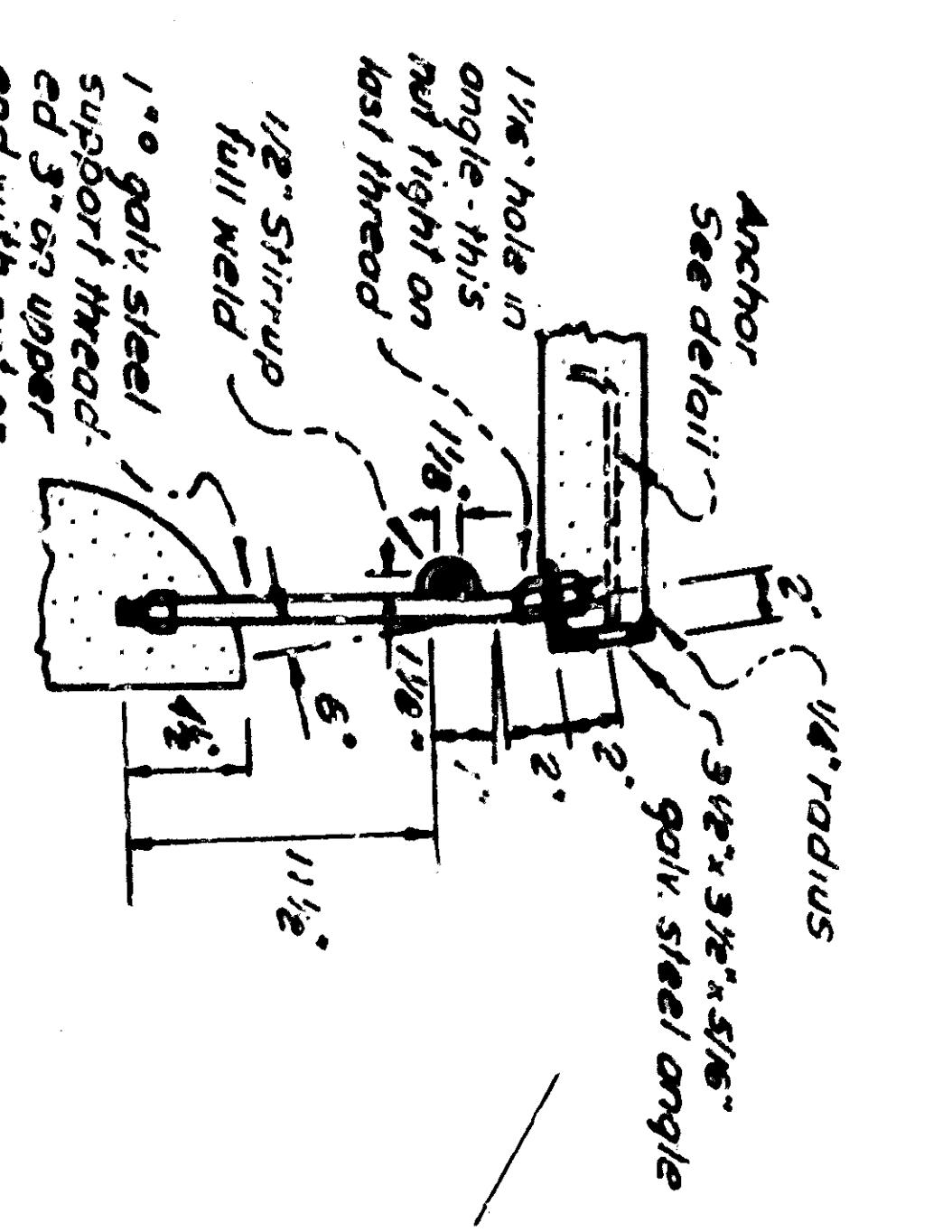
NOTE -
 1. Little Mountain Drive per Typical Section No. 1 (Sheet No. 1) to Sta. 9141.3. Transition to Typical Section No. 3 per detail below. See Typ. Sec. No. 2 @ Sta. 10101.6.

NOTE -
 Transition from Typical Section No. 2 @ Sta. 12150 to Typical Section No. 1 @ Sta. 13100



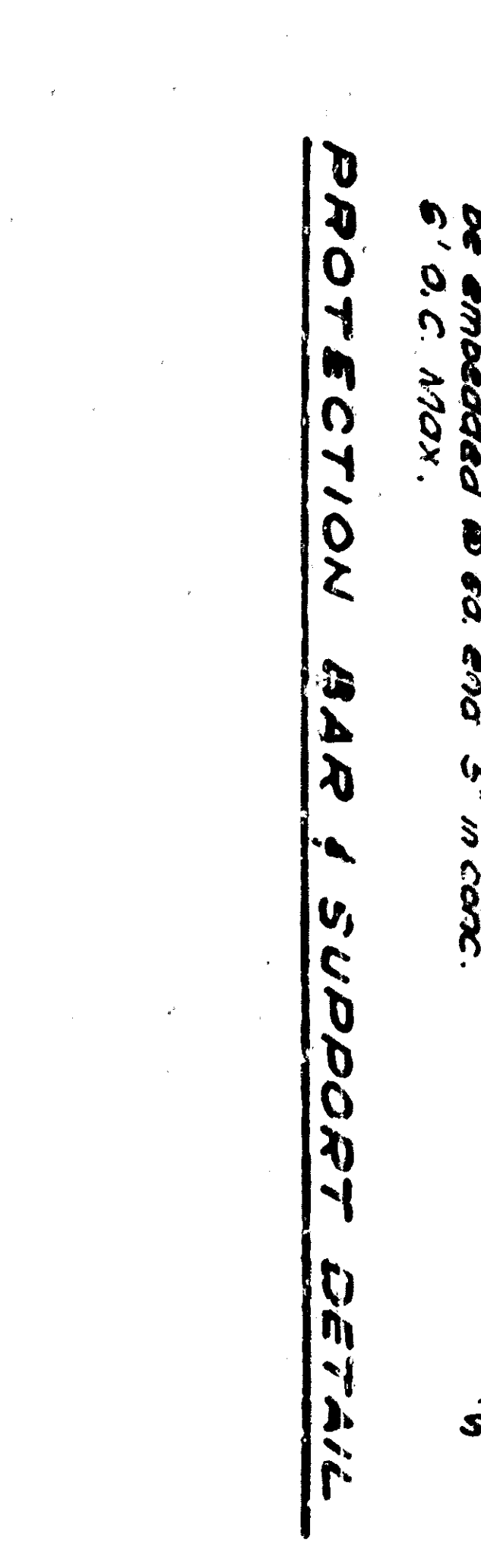
R.C.B. NO. 1

Scale: 1"=1'-3"



SECTION 'A'-'A'

Scale: 1"=1'-3"



PROTECTION BAR & SUPPORT DETAIL

ANCHOR DETAIL

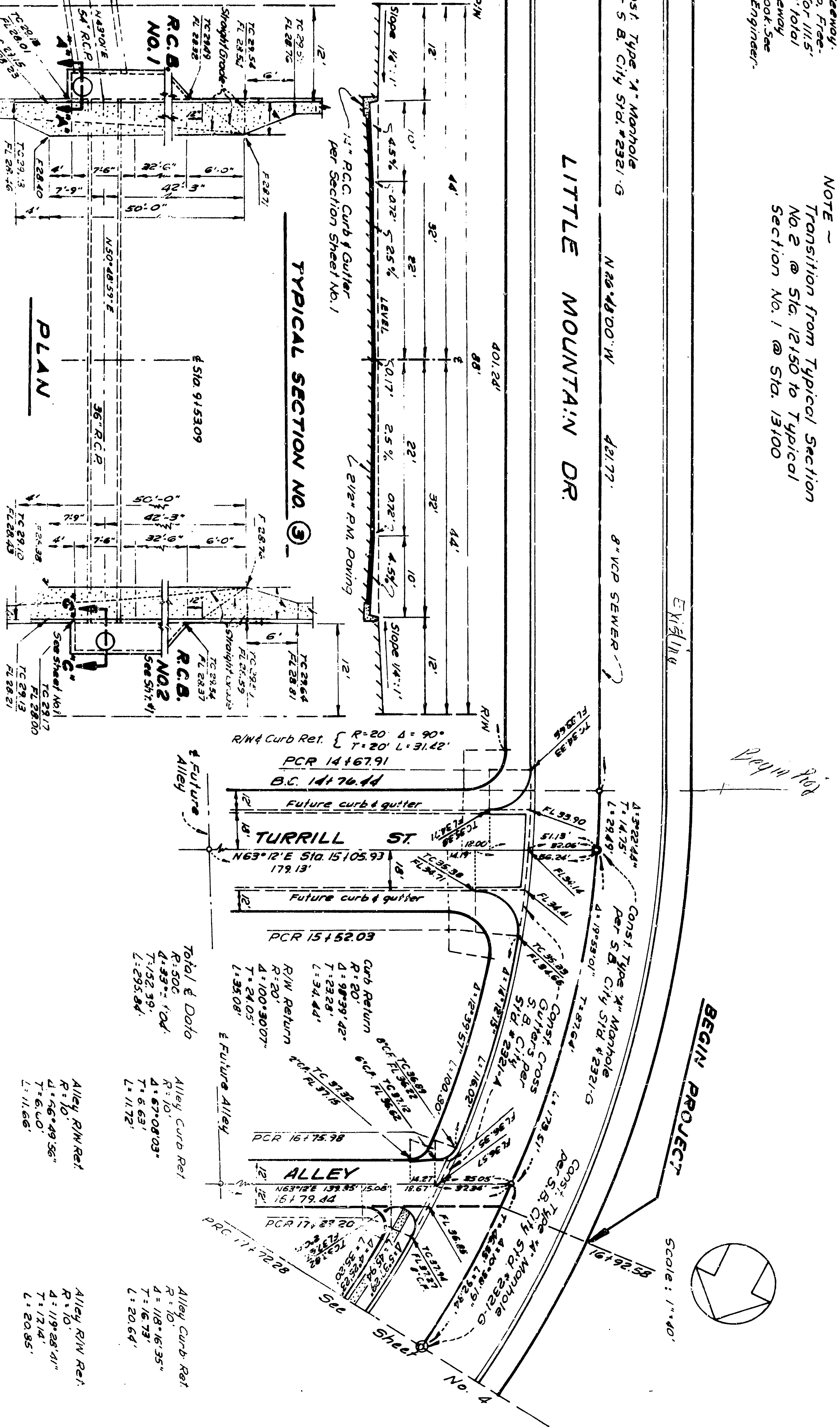
SECTION 'A'-'A'

CULVERT AT STA. 915309

Scale: 1"=1'-0"

| | | | |
|----|---------|---------|---------|
| 1 | Revised | Revised | 1/15/50 |
| 2 | Revised | Revised | 1/15/50 |
| 3 | Revised | Revised | 1/15/50 |
| 4 | Revised | Revised | 1/15/50 |
| 5 | Revised | Revised | 1/15/50 |
| 6 | Revised | Revised | 1/15/50 |
| 7 | Revised | Revised | 1/15/50 |
| 8 | Revised | Revised | 1/15/50 |
| 9 | Revised | Revised | 1/15/50 |
| 10 | Revised | Revised | 1/15/50 |

DEPARTMENT OF ENGINEERING
 CITY OF SAN BERNARDINO
 LITTLE MOUNTAIN DRIVE
 FROM MT. VERNON AVE. TO 8729 1/2 WILLY
 APPROVED BY: [Signature]
 SUBMITTED BY: [Signature]
 DRAWING NO. 2389
 SHEET 3 OF 3 SHEETS



TYPICAL SECTION NO. 2

Scale: 1"=1'-0"

DEPARTMENT OF ENGINEERING
 CITY OF SAN BERNARDINO
 LITTLE MOUNTAIN DRIVE
 FROM MT. VERNON AVE. TO 8729 1/2 WILLY
 APPROVED BY: [Signature]
 SUBMITTED BY: [Signature]
 DRAWING NO. 2389
 SHEET 3 OF 3 SHEETS